



ALWAYS THE
SAFE CHOICE!

secu **ENTRY**

secuENTRY 7090 HOTEL PRO Software

Dear customer,

Thank you for choosing the lock management software secuENTRY 7090 HOTEL PRO from BURG-WÄCHTER.

With this secuENTRY 7090 HOTEL PRO software temporary limited guest codes for hotel application or holiday apartments can be generated. Of course these created guest codes can be used for established common doors, gates or garages, too.

To administrate your locking system for hotel application or holiday apartments the secuENTRY PPRO 7083 software is required to configure the locking plan.

The six or nine digit code, which has been generated by the hotel software, contains all the information regarding the validity including the check-out time. This is guaranteed during the generation by complex algorithms.

Transferring the codes to the locking cylinder of the respective hotel room is not necessary.

The adaption to your specified hotel structure is just as possible as the cooperation via the connection to check-in-machines and the booking software.

A linkage to the locks is not required.

We very much hope that you enjoy the new management software.

Inhalt

1	INSTALLATION ON WINDOWS 7 OR HIGHER.....	3
2	BACKUP AND UNINSTALL	3
3	SECUENTRY 7090 HOTEL PRO SOFTWARE	3
3.1	Configuration - Settings.....	4
3.2	Locks Management.....	9
3.2.1	Hotel code	9
3.2.2	History	12

1 Installation on Windows 7 or higher

System requirements:

- Windows 7 or higher
- Standard configuration,
- USB port
- Screen resolution of min.1200 x 1024 pixels
- .NET Framework 4.6.1
- Min. 1GB of RAM
- Users with Administration rights
- Min. 50 MB free space
- Webcam

Please note that the different software versions cannot be installed simultaneously on your PC.

The installation is carried out just as the installation of the secuENTRY PRO software. Please run the **SecuENTRY HOTEL_Setup.exe** to install the hotel software, the setup for installation the software will start then. Please follow the installation instructions.

There is a password required for installation. This password is added to the installation-CD.

Please start the software after a successful installation.

2 Backup and uninstall

For a data backup, the complete hotel database folder must be backed up. The file and storage directory is determined during the initial setup.

Save this folder to a different location. If you lose data, you can then reload the data.

When uninstalling the software, the user data is always retained.

3 secuENTRY 7090 HOTEL PRO Software

The secuENTRY 7090 HOTEL PRO Software is used for a safe generation of guest codes and complements the secuENTRY PRO 7083 software for hotel application.

After starting the software the following window appears.

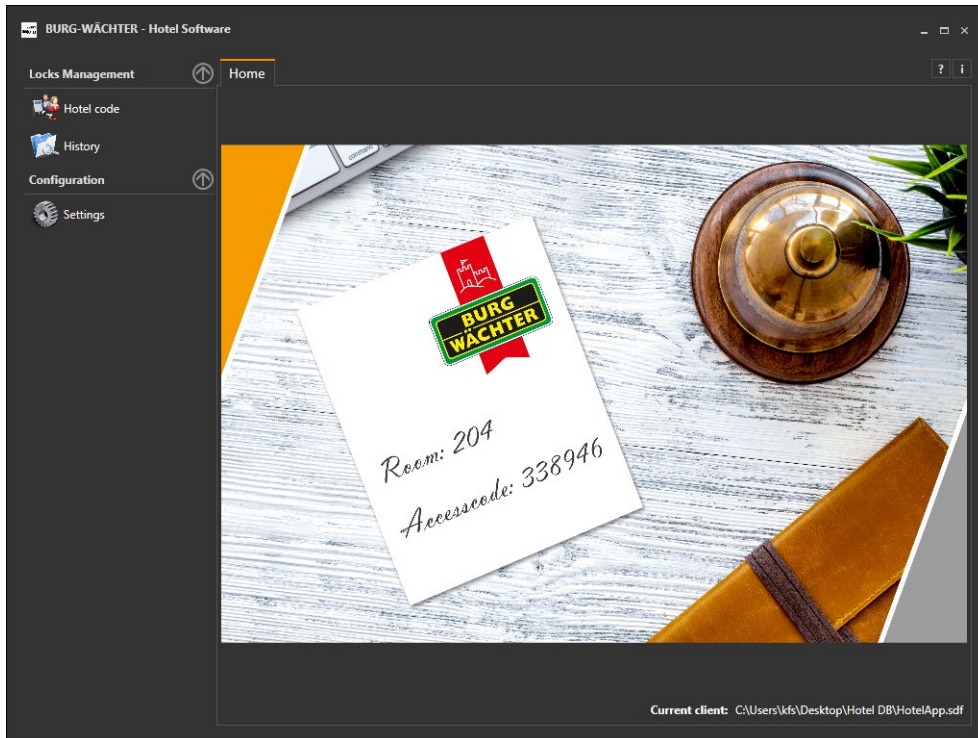


Abb. 1: Start window secuENTRY PRO Hotel Software

In the main window the database name and storage location is shown. On the left side of the main window there are two main categories with the respective submenus listed.

- Lock Management
 - Hotel code
 - History
- Configuration
 - Settings

With the arrow next to the categories the submenus can be shown or hide. The submenus are selected with a left click and the respective menu appears in the main window.

3.1 Configuration - Settings

After starting the secuENTRY hotel software for the first time a hotel database need to be created before the main window becomes visible.

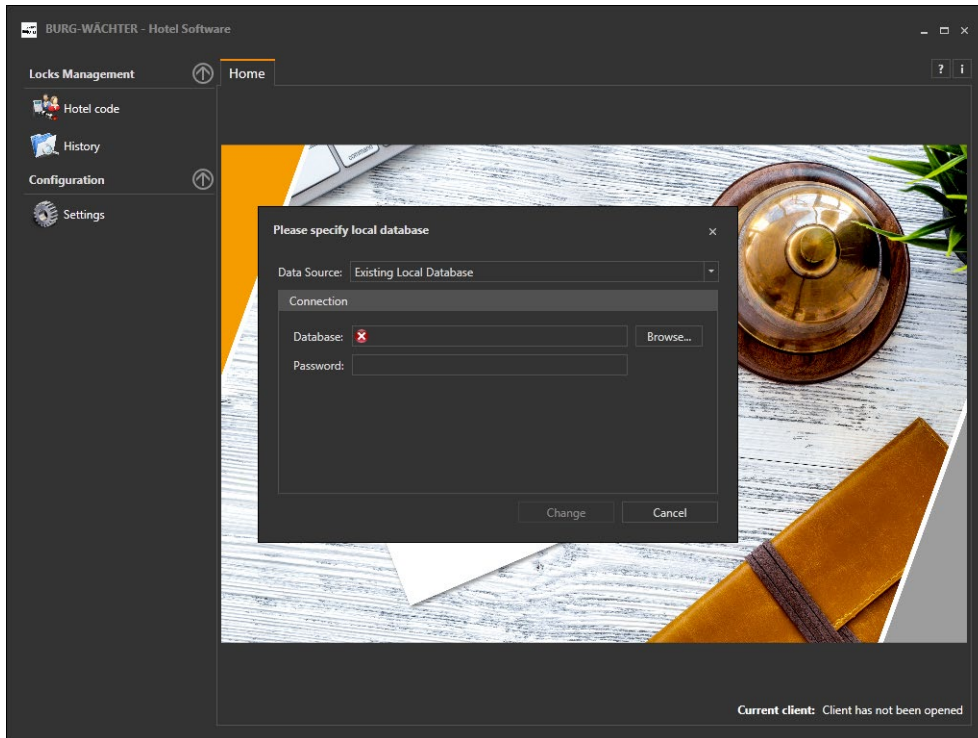


Abb. 2: Software window after starting the software for the first time

With the drop-down menu the data source need to be changed to „New Local Database“.

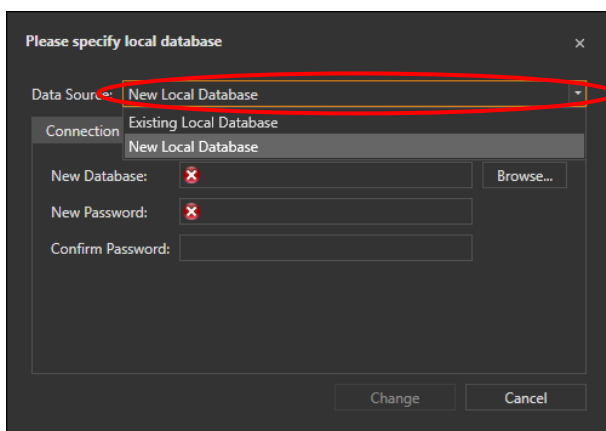


Abb. 3: Generating a New Local Database

Please select with the button **1** the same storage directory for the database, where the exported database (the hotel.sqlite file) from the secuENTRY PRO Software is saved. Confirm your selection. The hotel database HotelApp.sdf is automatically generated. If you would like to use the secuENTRY Hotel DLL add-in later, the name must not be changed.

Please determine a password and enter it two times in the respective field **2** before your entries for a New Local Database could be confirmed **3**.

Tip: A copy of this database or folder should be stored at a second place for data backup.

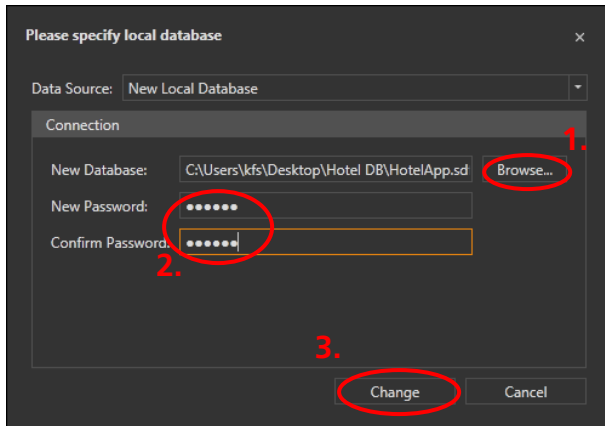


Abb. 4: Specification of a New Local Database

The next step is to determine a history folder. Therefore, please specify a new history database **4** in the menu *Settings* under the category *Administration*.

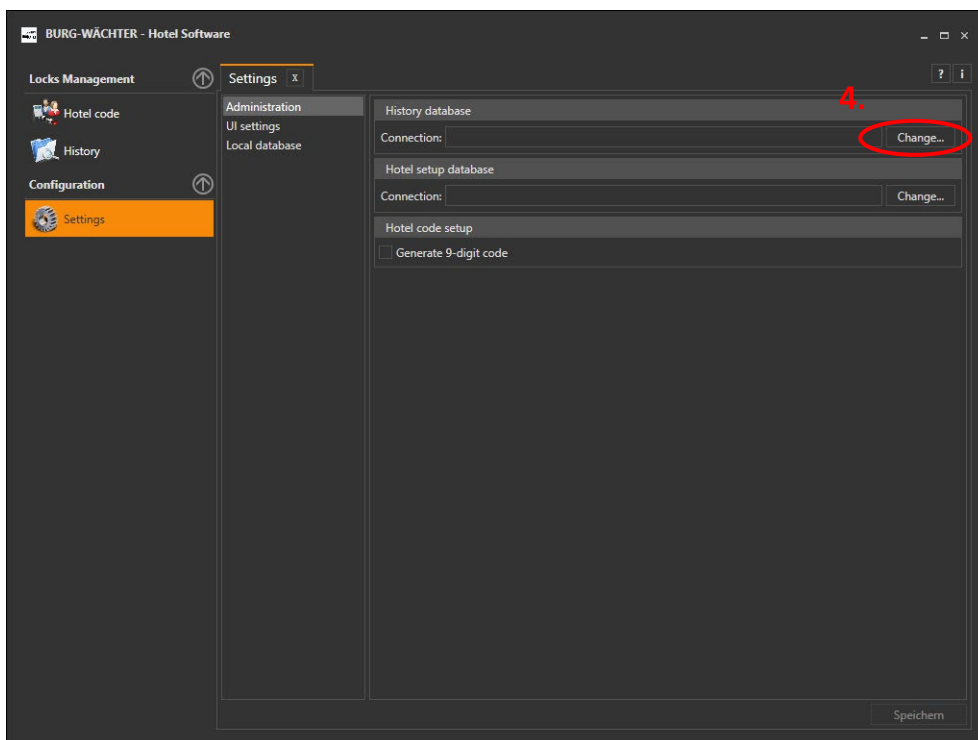


Abb. 5: Specification of new history database

Again, please select the same directory **6**, where the new database have been generated already. Enter a password two times **7** and confirm your entries **8**.

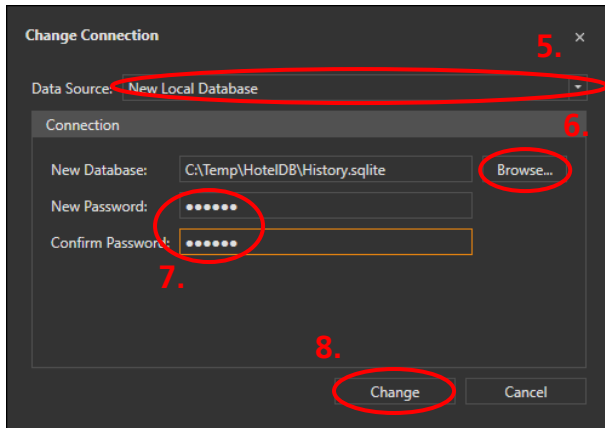


Abb. 6: Specification of new history database

Now it is necessary to integrate the hotel.sqlite file, which have been exported by the secuENTRY PRO software, in the hotel software. Therefore select in the field Hotel setup database **9** the hotel.sqlite file.

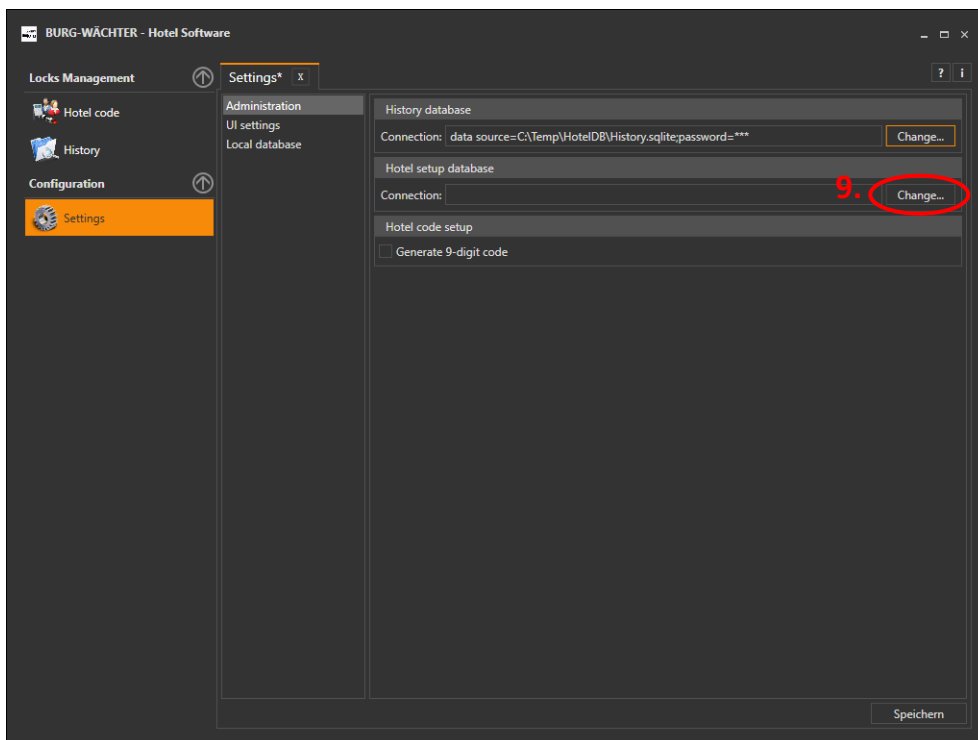


Abb. 7: Integrate Hotel setup database

A password is not required, the field can stay empty.

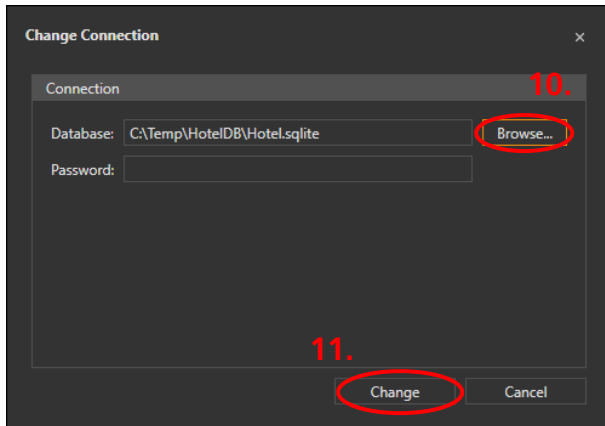



Abb. 8: Integrate Hotel setup database

If the locks have been adapted to "Additional entrance with nine digit code" via the Setup Software, for these locks the option "Generate 9-digit code" **12** need to be chosen within this hotel software. This means from now on a nine digit code is required to be typed in via a keypad to open the lock. Room doors are still open with the first six digits of this code, so the last three digits are not necessary to open a room door.

Tip: The programmed six digits standard codes, so to say the codes which are manually entered in the menu User of the secuENTRY PRO Software, are valid furthermore according to the settings in the Locking plan. If an additional entrance was defined as nine digit code, the standard codes have to be completed with "000". For example, a caretaker with the PIN Code 123456 was created. If this user caretaker wants to open a nine digit optional entrance, 123456**000** have to be typed in. Alternatively the entry

123456 can be confirmed with Enter, so in this case 123456  .

Save these settings **13**.

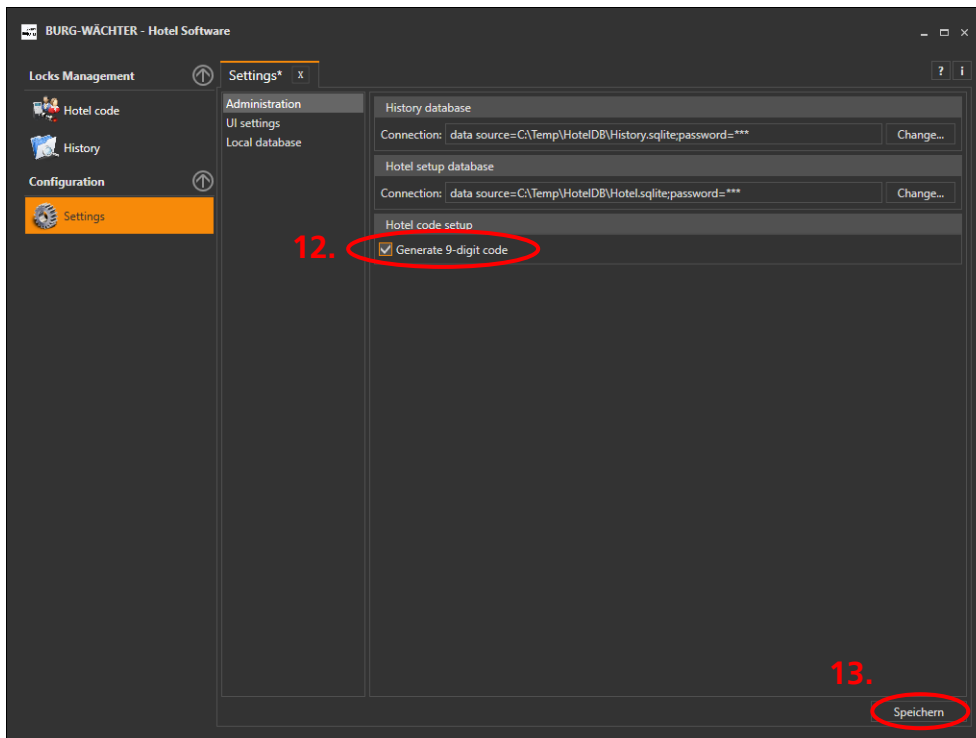


Abb. 9: Setup guestcode

3.2 Locks Management

In the category *Locks Management* you can find all the information of the single locks and the option to generate guest codes.

3.2.1 Hotel code

Please choose the menu *Hotel code* in the category *Locks Management*.

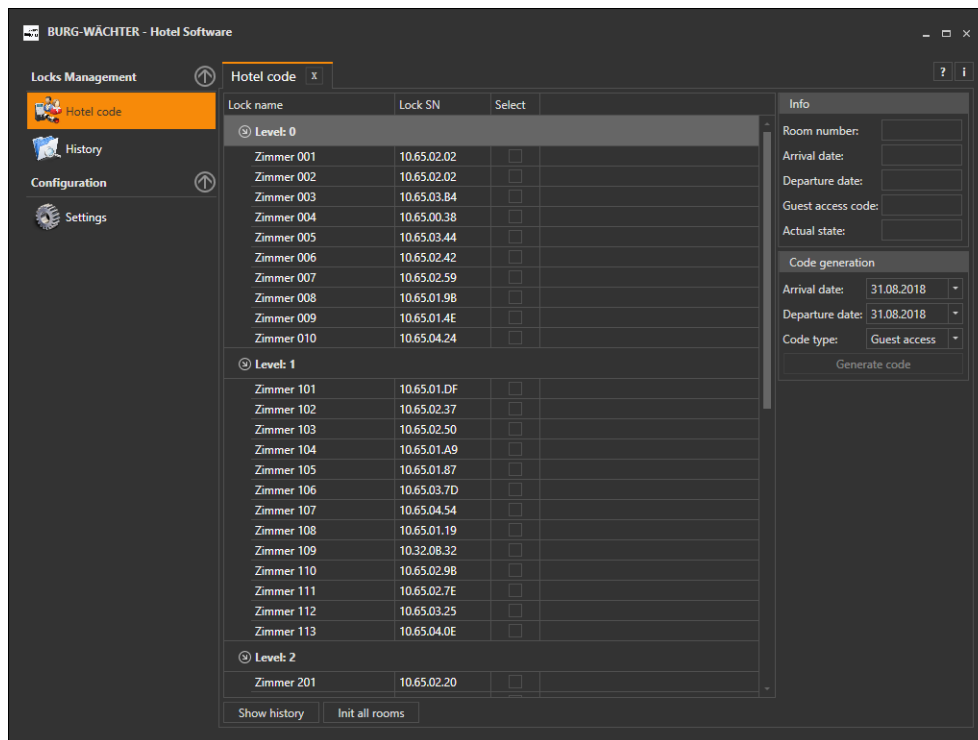


Abb. 10: Hotel code

According to your exported data from the secuENTRY Software all the stored locks with the door mode „Room door“ are listed.

For these rooms a hotel code respectively the guest code can be generated. Choose the lock or the room **1**, for instance room 8. Now the validity of the guest code can be determined, so the Arrival and Departure date of the guest need to be entered **2**.

Tip: We recommend to generate the guest codes not before check-in. Thus it is guaranteed that no generated codes are skipped. Hereby the codes' date of creation is critical. For example, for guest A a code is generated from 10.08.2018 till 11.08.2018 (advance booking) and after this for guest B a code from 08.08.2018 till 09.08.2018. Once guest B uses his code to open a door the code for guest A automatically gets invalid, because the date of creation for code B lies after the one for code A (Code A is deemed to be out-of-date).

The maximum booking time is 29 overnight stays. For Code type "Guest access" **3** need to be assigned.

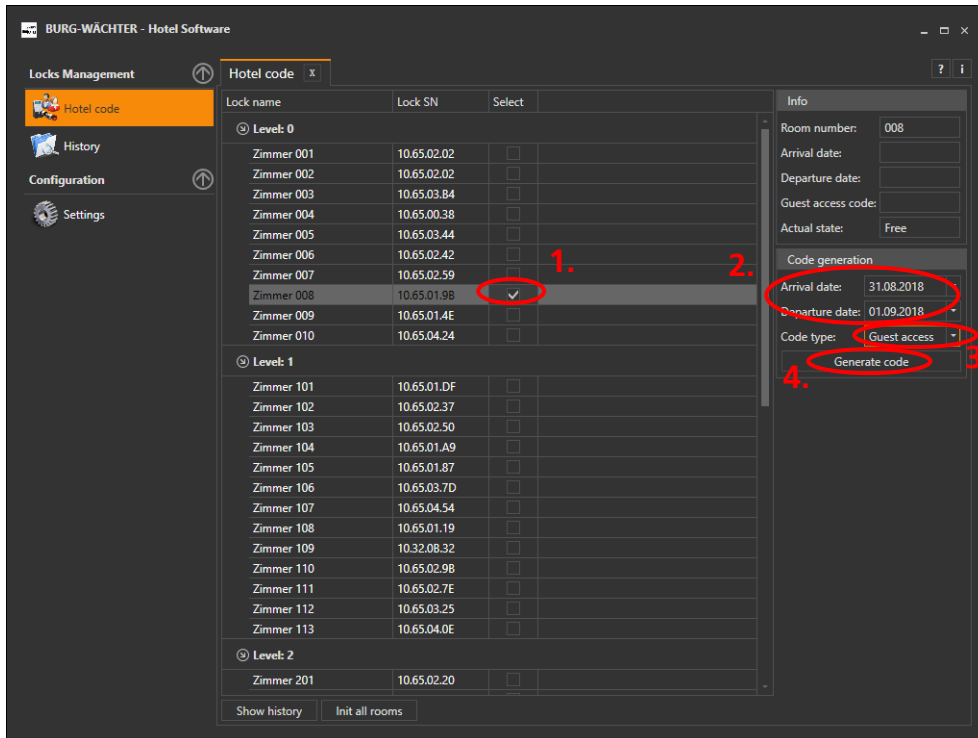


Abb. 11: Hotelcode room 008

Generate the code **4**. The generated nine-digit code is shown.

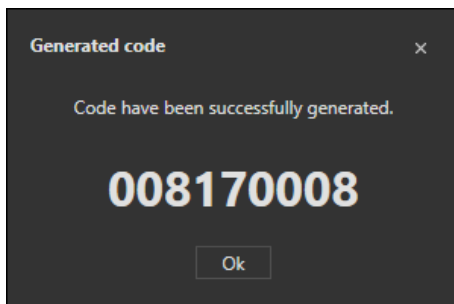


Abb. 12: Example for generated code

Depending on the settings in the secuENTRY PRO Software a guest is allowed to open his room door or additional entrances with this code during the defined access time. As assigned for common or additional entrances the complete nine-digit code is required, whereas for room doors the first six digits of the code are sufficient.

This newly generated code is shown in the info box **5**. With "Show history" **6** further information regarding the locks are displayed.

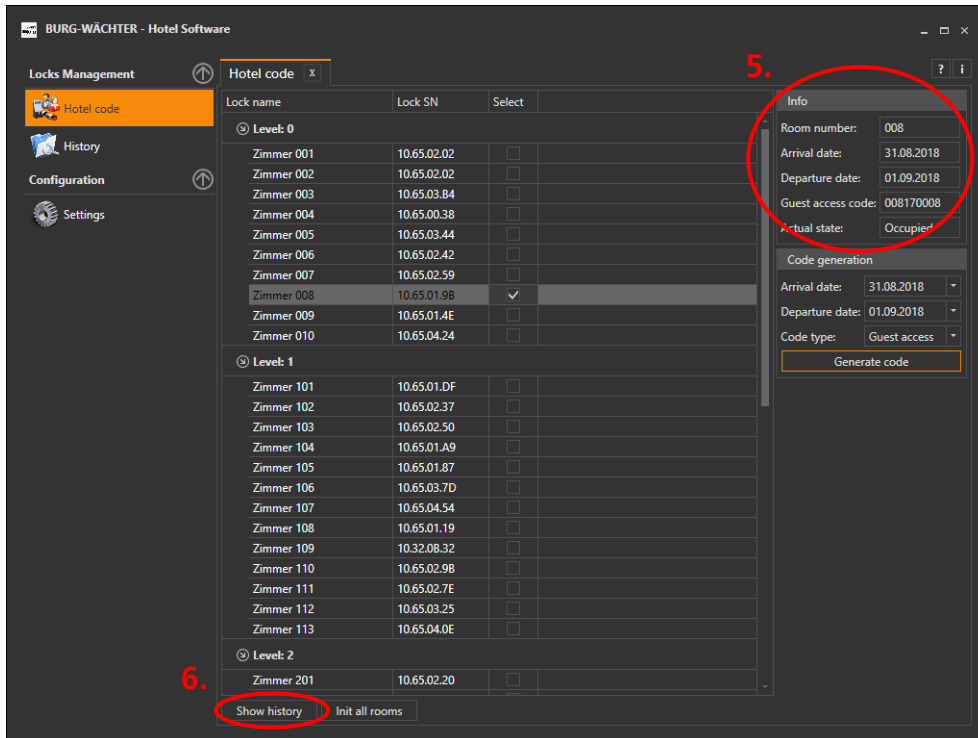


Abb. 13: Show history

Here the date of creation of a code is stored **7** as well as the code itself.

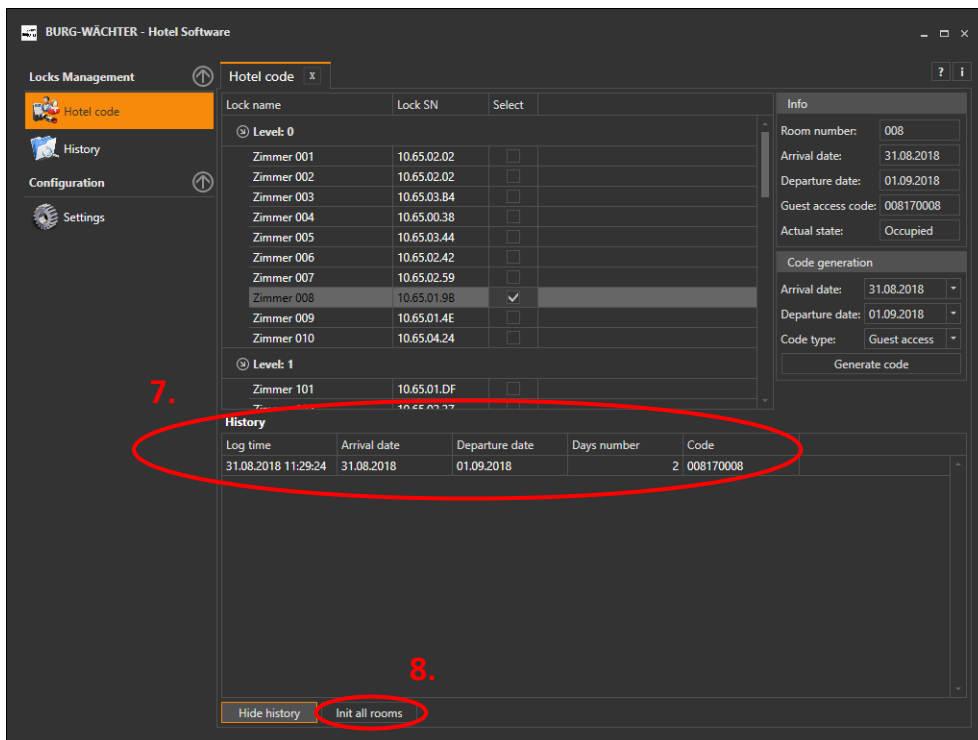


Abb. 14: Show history

In this sample a code for room 8 have been generated. After this all rooms have exemplarily been initialised, so all counters are reset.

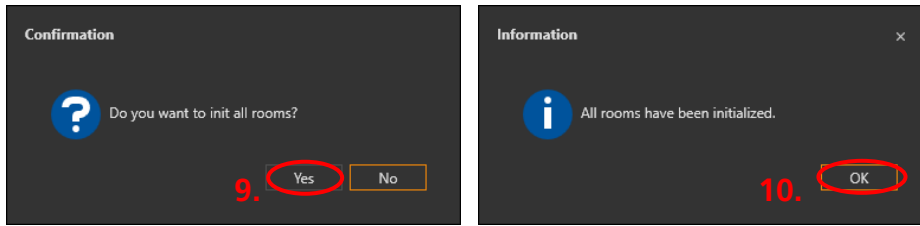


Abb. 15: Initialise rooms

Thus if a new code is generated after initialising all the rooms the same code is assigned again. If a new code is generated without prior initialisation, of course this code is different from the code before.

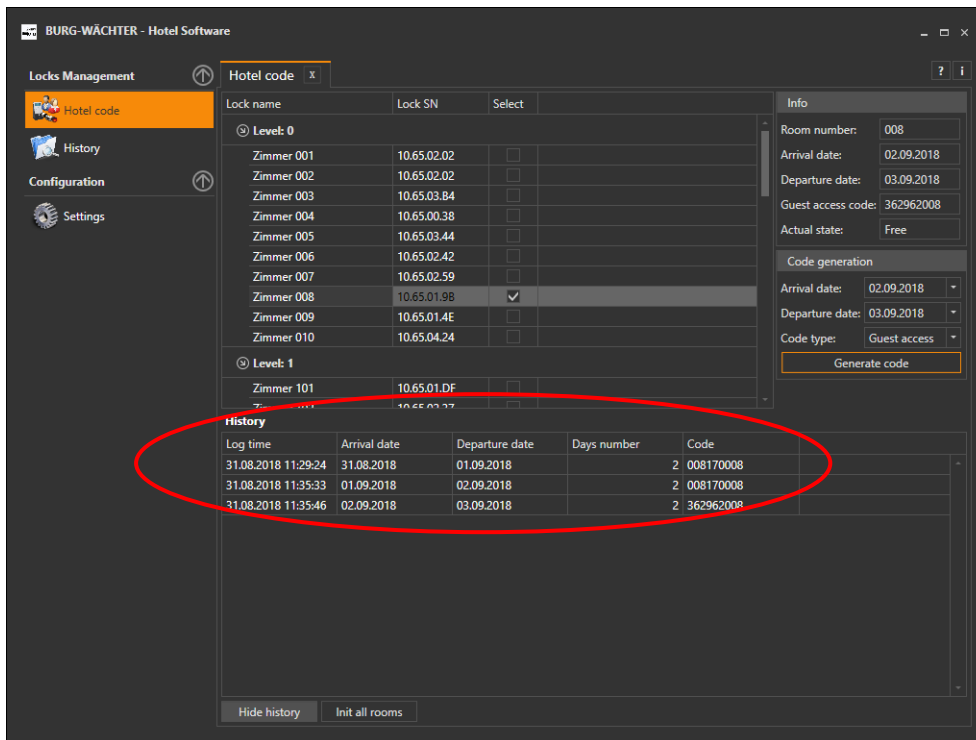


Abb. 16: History

3.2.2 History

Under history all the actions regarding the locks within the secuENTRY Hotel software are recorded, for example which user in which way generated guest codes, for which access time which code was assigned or when all the codes for the rooms have been initialised.

BURG-WÄCHTER - Hotel Software

Locks Management

Hotel code

History

Configuration

Settings

History

Drag a column header here to group by that column

Key	Arrival date	Departure date	Days number	Code	Operating mode	Operating optic
8	31.08.2018	01.09.2018	2	008170008		0
0	31.08.2018	31.08.2018		0 000000		99
0	31.08.2018	31.08.2018		0 000000		99
0	31.08.2018	31.08.2018		0 000000		99
0	31.08.2018	31.08.2018		0 000000		99
8	01.09.2018	02.09.2018	2	008170008		0
8	02.09.2018	03.09.2018	2	362962008		0

Export to CSV

Abb. 17: History

Imprint

The copyright of this manual belongs exclusively to the BURG-WÄCHTER KG.

The reproduction, even on electronic data carriers requires the written permission of BURG-WÄCHTER KG. Reprinting – even in part – is prohibited.

Errors and technical alterations reserved.

© Copyright by BURG-WÄCHTER KG, Wetter (Germany)

BURG-WÄCHTER KG

Altenhofer Weg 15
58300 Wetter
Germany

info@burg.biz
www.burg.biz