

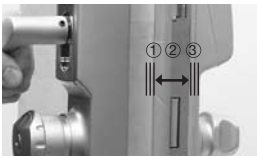
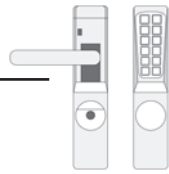


Montageanleitung  
Assembly Instructions  
Instructions de montage



TSM 300, 500, 510 Euro





Türstärke, door thicknesses, épaisseurs de portes  
① = 38 - 58 mm ② = 55 - 75 mm ③ = 75 - 100 mm



## INHALT, CONTENTS, CONTENU

Montage  
Assembly  
Montage ..... **3**

Ändern des Abstandsmaßes 70 - 92 mm  
Changing of the distance measure  
70 - 92 mm  
Changement des entr'axes  
70 - 92 mm ..... **15**

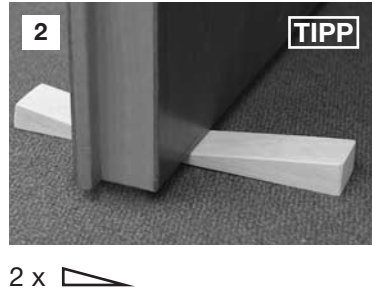
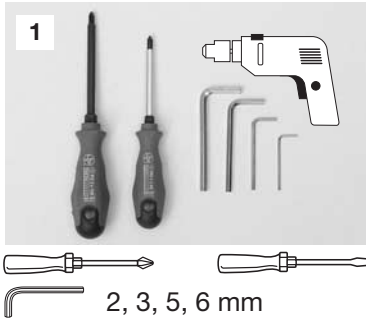
Achsaustausch bei versch. Türstärken  
Changing of the axis with different  
door thicknesses  
Changement du carré selon les  
épaisseurs de portes ..... **17**

Tastaturwechsel rechts/links  
Keyboard exchange right / left  
Changement du clavier  
à droite / à gauche ..... **22**

Für Feuerhemmende Türen (FH)  
bitte Sonderzubehör TSM-FH verwenden  
For fire-repelling doors  
use special accessories TSM-FH  
Pour portes coupe-feu  
utiliser accessoires spéciales TSM-FH

Druck- und Satzfehler vorbehalten.  
Subject to typographical / printer's errors.  
Sous toute réserve de fautes typographiques.

**MONTAGE  
ASSEMBLY  
MONTAGE**



Montage mit Profi-Bohrschablone, Assembly with professional template, Montage avec gabarit de forage

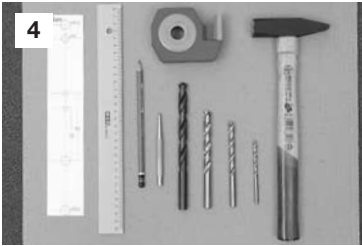
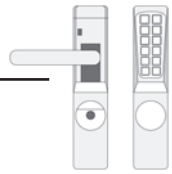



weiter S. 8, Bild 25  
see p. 8, photo 25  
voir p. 8, photo 25

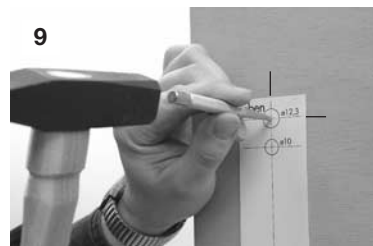
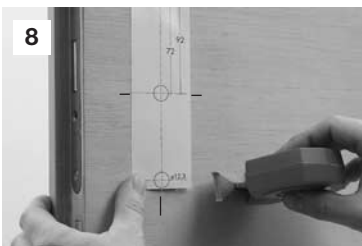
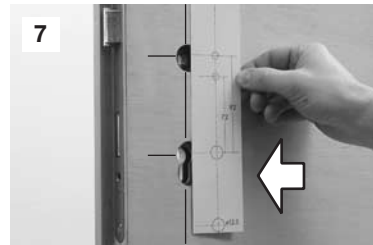
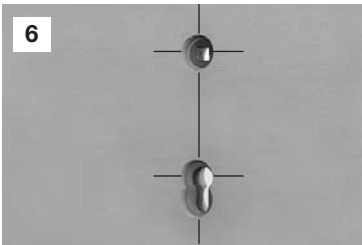
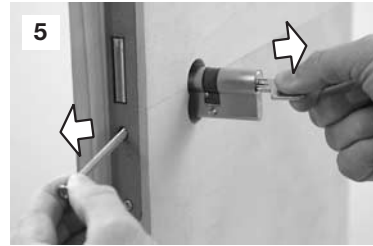
Montage mit Standard-Papierschablone, Assembly with standard template, Montage avec gabarit en cartonne

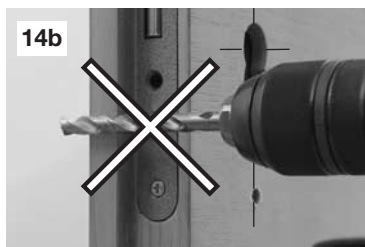
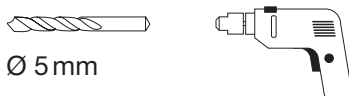
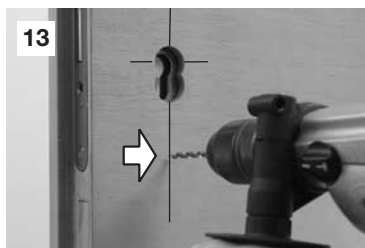
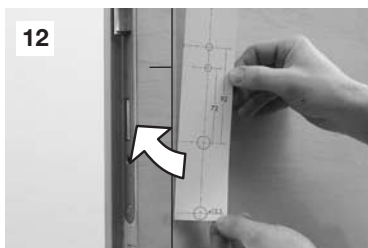
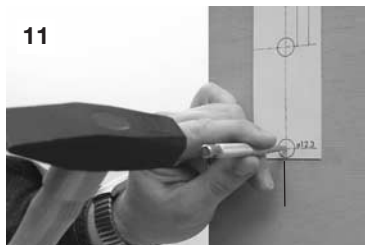


weiter S. 4, Bild 4  
see p. 4, photo 4  
voir p. 4, photo 4

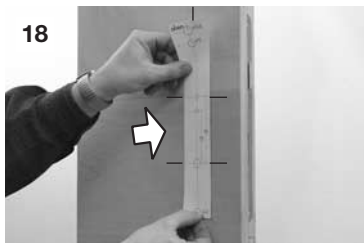
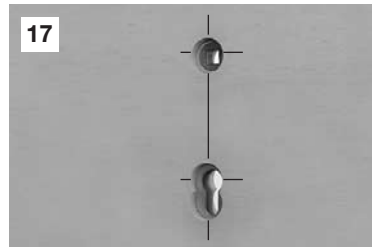
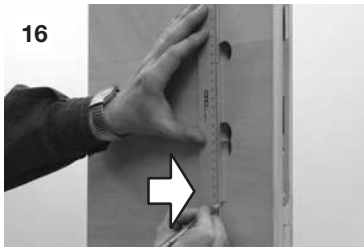
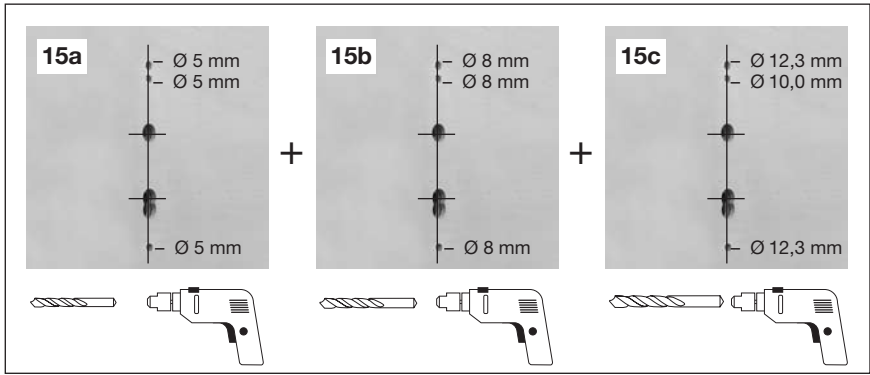
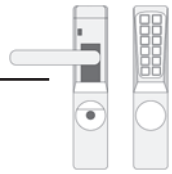


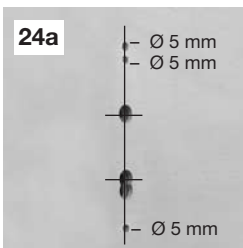
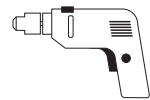
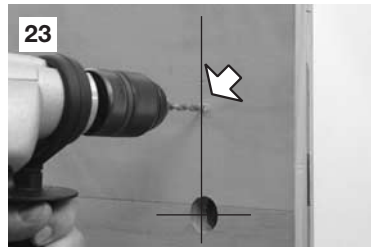
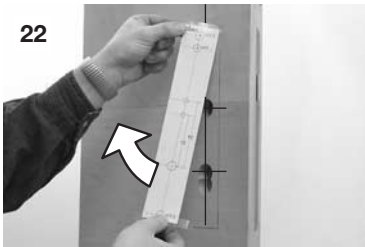
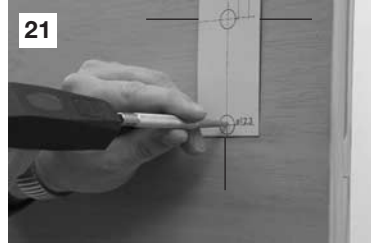
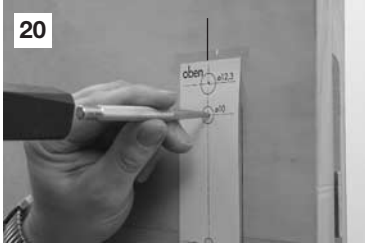
  
Ø 5, Ø 8, Ø 10, Ø 12,3 mm



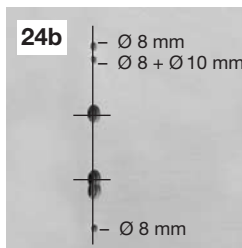


ok

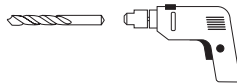
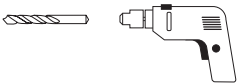




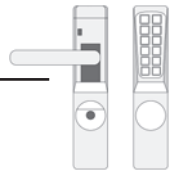
+



weiter S. 10, Bild 39  
see p. 10, photo 39  
voir p. 10, photo 39

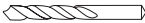








**MONTAGE MIT PROFI-BOHRSCABLONE**  
**ASSEMBLY WITH PROFESSIONAL TEMPLATE**  
**MONTAGE AVEC GABARIT DE FORAGE**



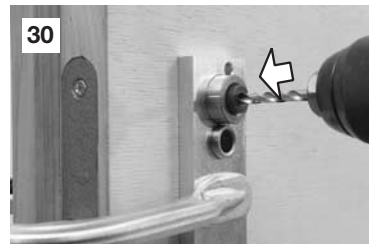
  
Ø 5, Ø 8, Ø 10, Ø 12,3 mm



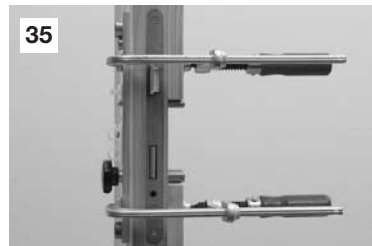
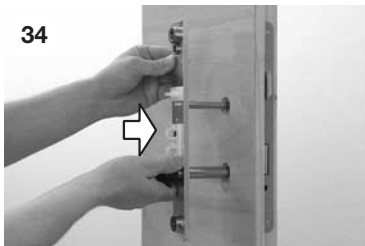
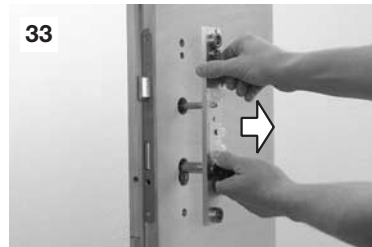
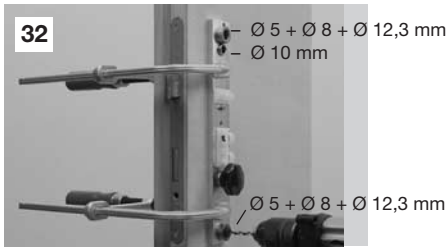
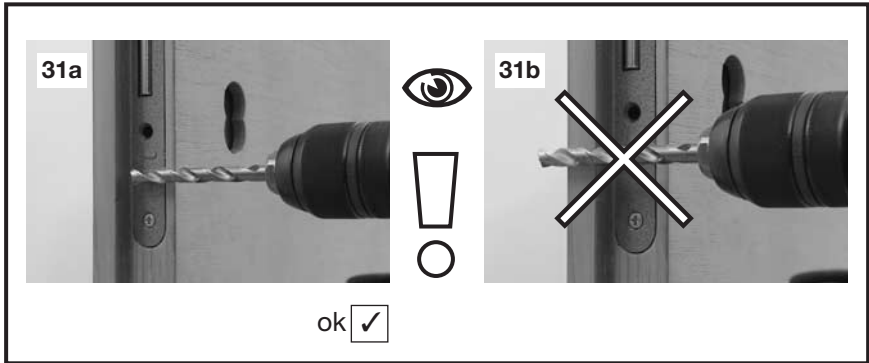
2 x  2 x 

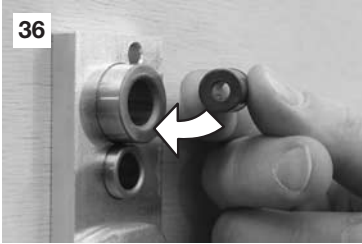
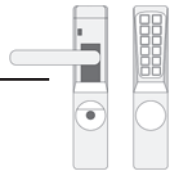


5 mm 

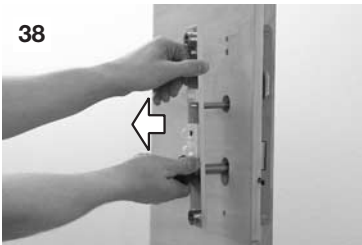
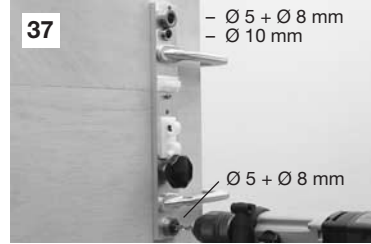


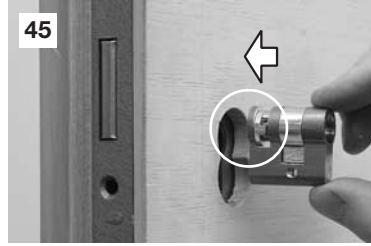
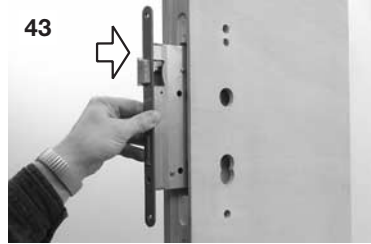
  
Ø 5 mm 





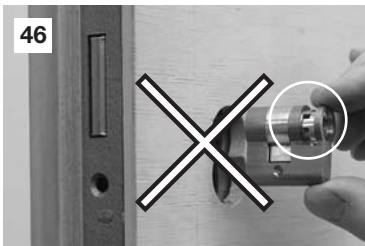
5 mm

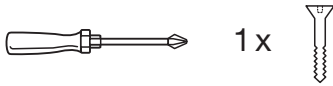
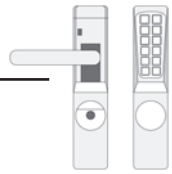




2 x

ok

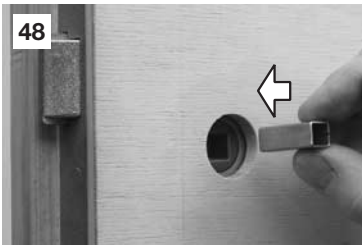




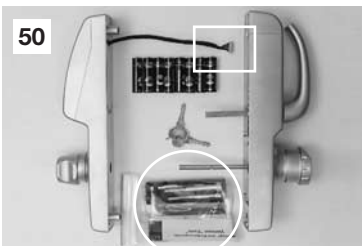
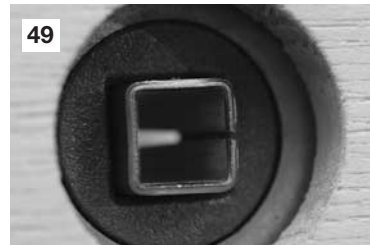
Bei feuerhemmender Tür (FH)  
siehe Sonderzubehör TSM-FH

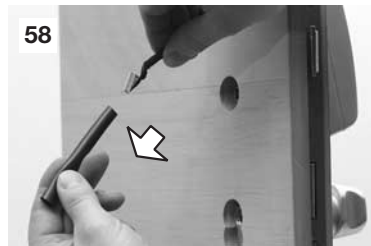
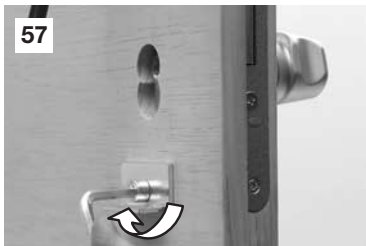
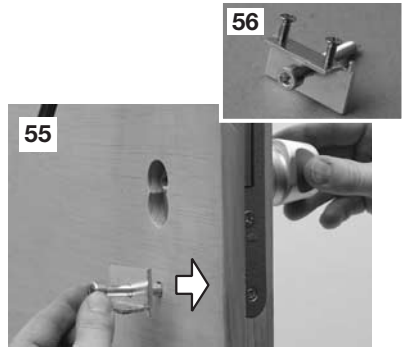
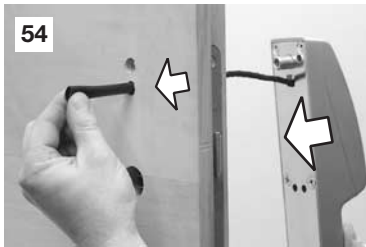
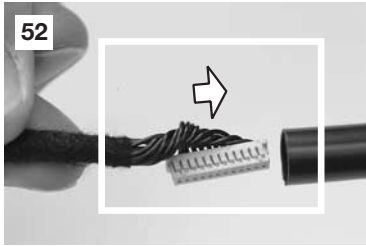
For fire-repelling doors  
see special accessories TSM-FH

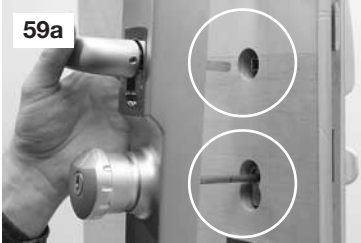
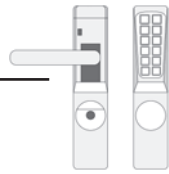
Pour portes coupe-feu  
voir accessoires spéciales TSM-FH



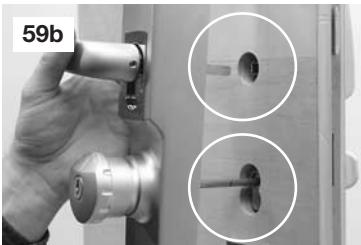
10 mm → 8 mm



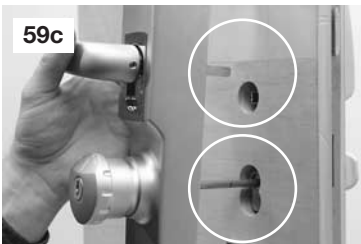




bei Türstärken 55 - 75 mm  
weiter S. 18 Bild 80  
for doors of 55 - 75 mm  
thickness see p. 18, photo 80  
pour portes d'épaisseur  
55 - 75 mm voir p. 18, photo 80

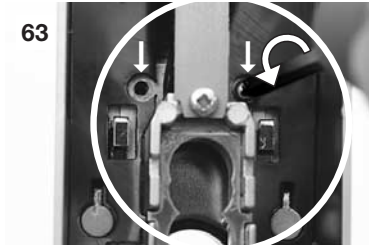
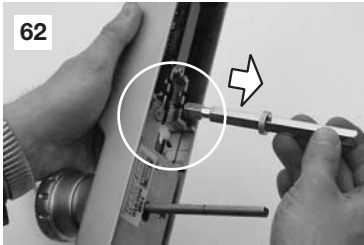
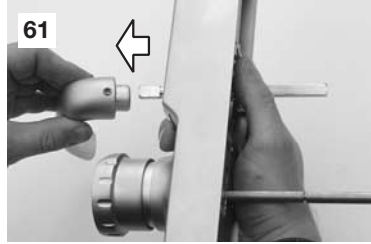
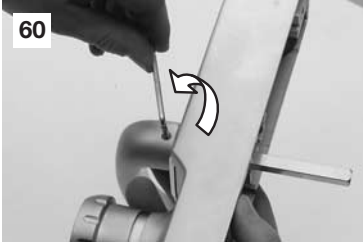


bei anderen Türstärken  
weiter S. 17 Bild 71  
for doors of other thickness  
see p. 17, photo 71  
pour autres épaisseurs de  
porte voir p. 17, photo 71



weiter S. 15, Bild 60  
see p. 15, photo 60  
voir p. 15, photo 60

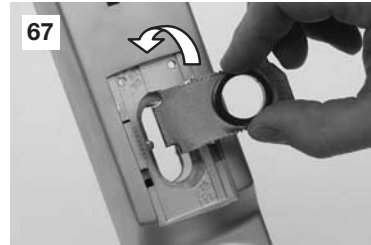
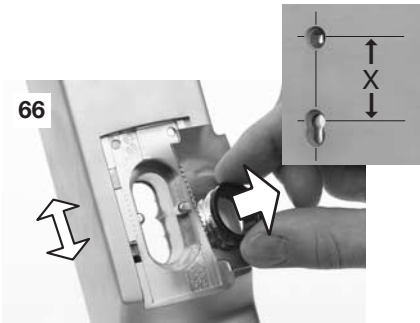
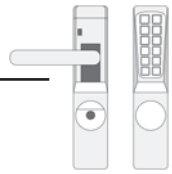
**ÄNDERN DES ABSTANDSMAßES 70 – 92 mm  
CHANGING OF THE DISTANCE MEASURE 70 – 92 mm  
CHANGEMENT DES ENTR'AXES 70 – 92 mm**



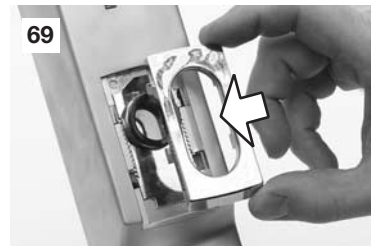
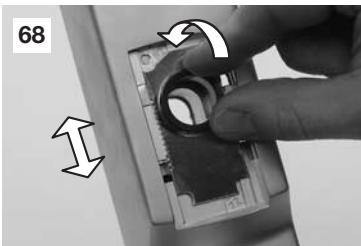
2 x







X = 70 - 92 mm

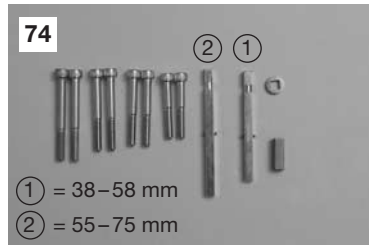
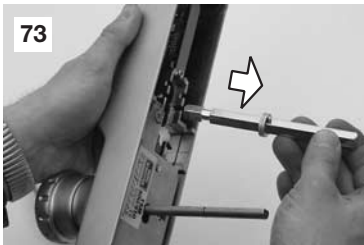
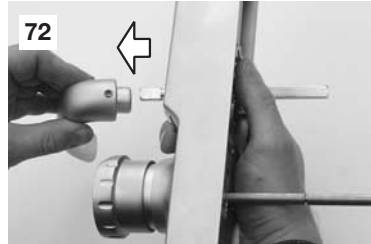
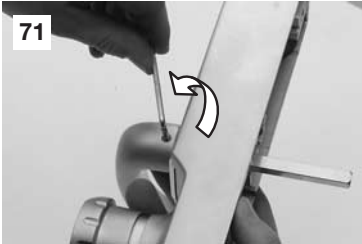


X = 70 - 92 mm



weiter S. 17, Bild 74  
see p. 17, photo 74  
voir p. 17, photo 74

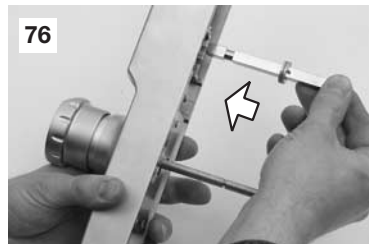
**ACHSAUSTAUSCH BEI VERSCHIEDENEN TÜRSTÄRKEN  
CHANGING OF THE AXIS WITH DIFFERENT DOOR THICKNESSES  
CHANGEMENT DU CARRÉ SELON LES ÉPAISSEURS DE PORTES**



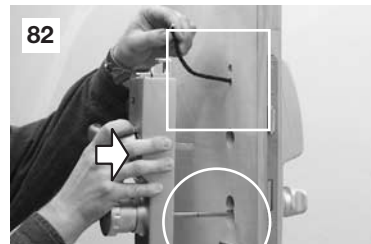
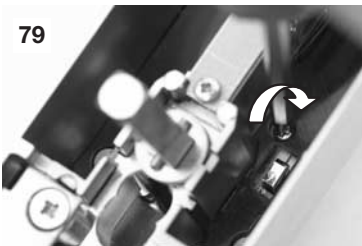
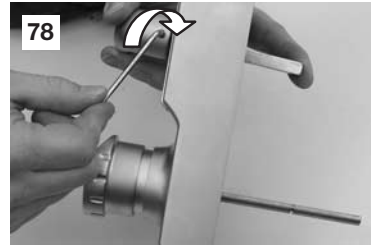
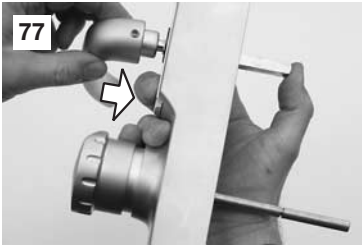
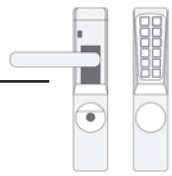
Türstärke ① ②  
Door thickness  
Épaisseurs de porte

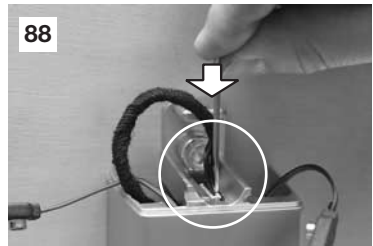
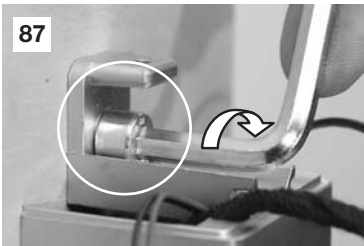
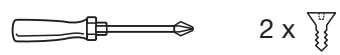
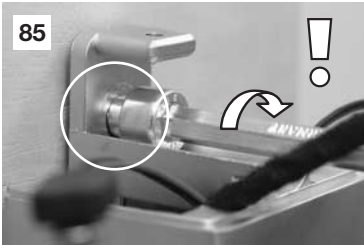
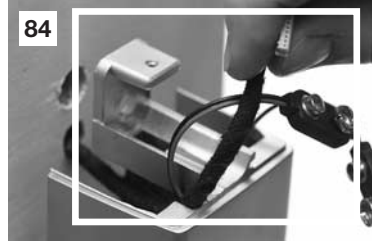
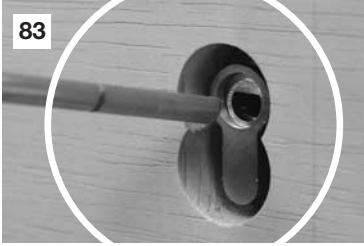


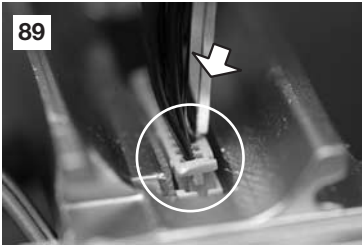
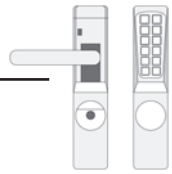
Türstärke ③  
Door thickness  
Épaisseurs de porte



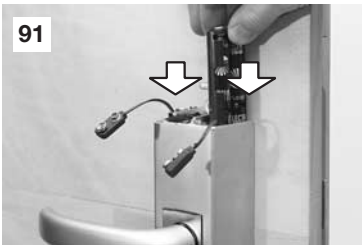
①, ②, ③



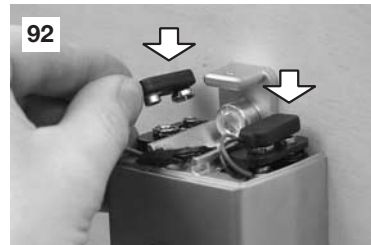




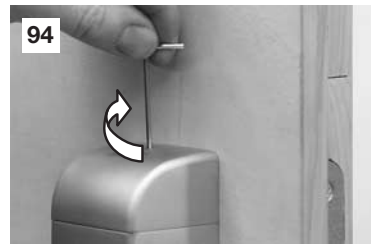
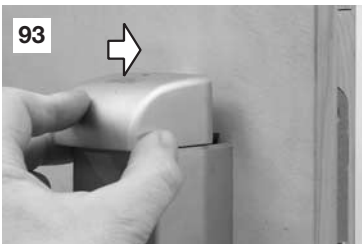
2 x 4 LR6



2 x



2 x





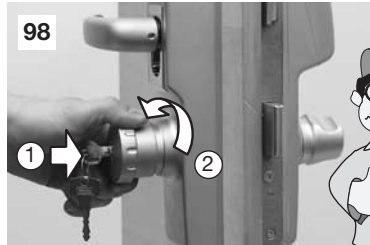
ON-CODE-ENTER



TEST

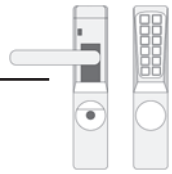


TEST

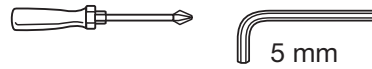
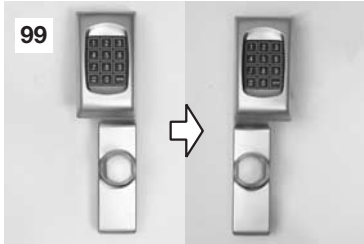


TEST ok

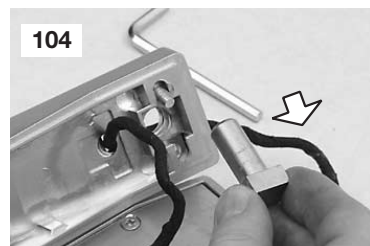
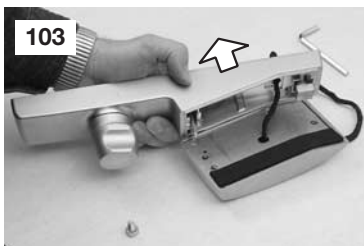
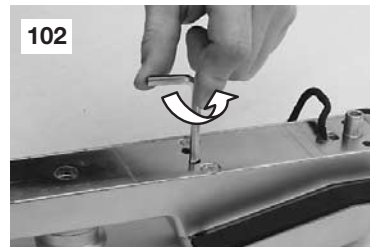
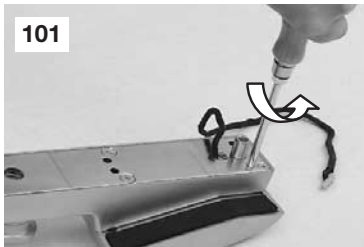


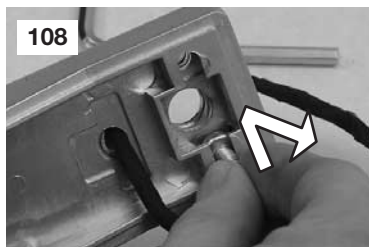
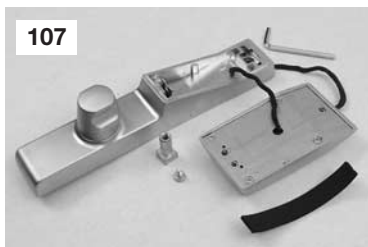
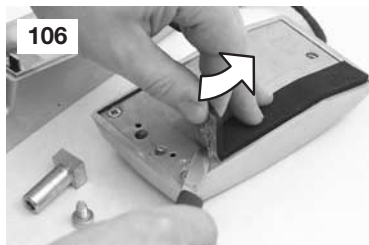
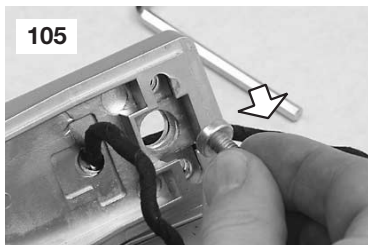


**TASTATURWECHSEL RECHTS/LINKS:  
KEYBOARD EXCHANGE RIGHT/LEFT  
CHANGEMENT DU CLAVIER À DROITE/À GAUCHE**

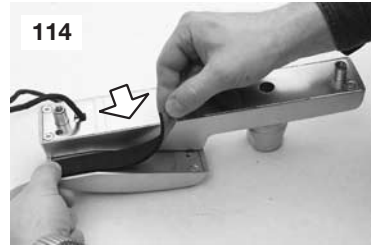
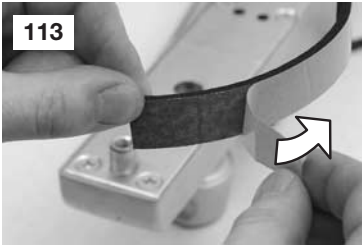
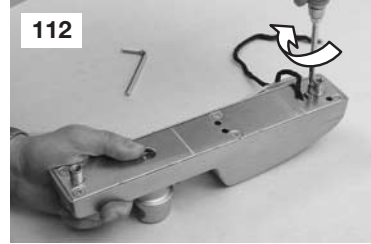
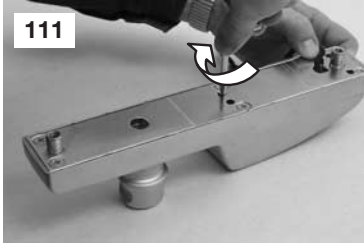
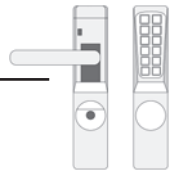


5 mm





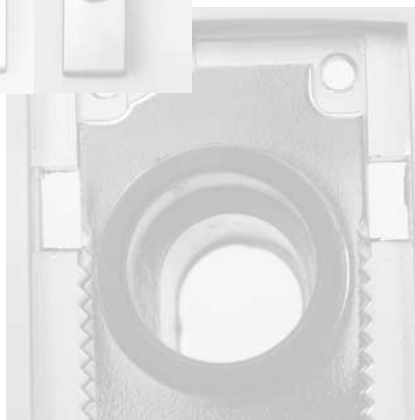
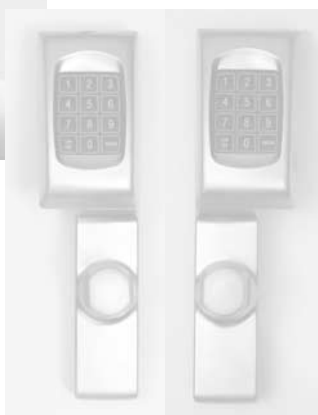




ok







## **BURG-WÄCHTER KG**

Altenhofer Weg 15  
D-58300 Wetter  
Germany

Telefon: +49 (0) 23 35-965-30  
Telefax: +49 (0) 23 35-965-390

[www.burg-waechter.de](http://www.burg-waechter.de)  
[info@burg-waechter.de](mailto:info@burg-waechter.de)



4 003482 827901